

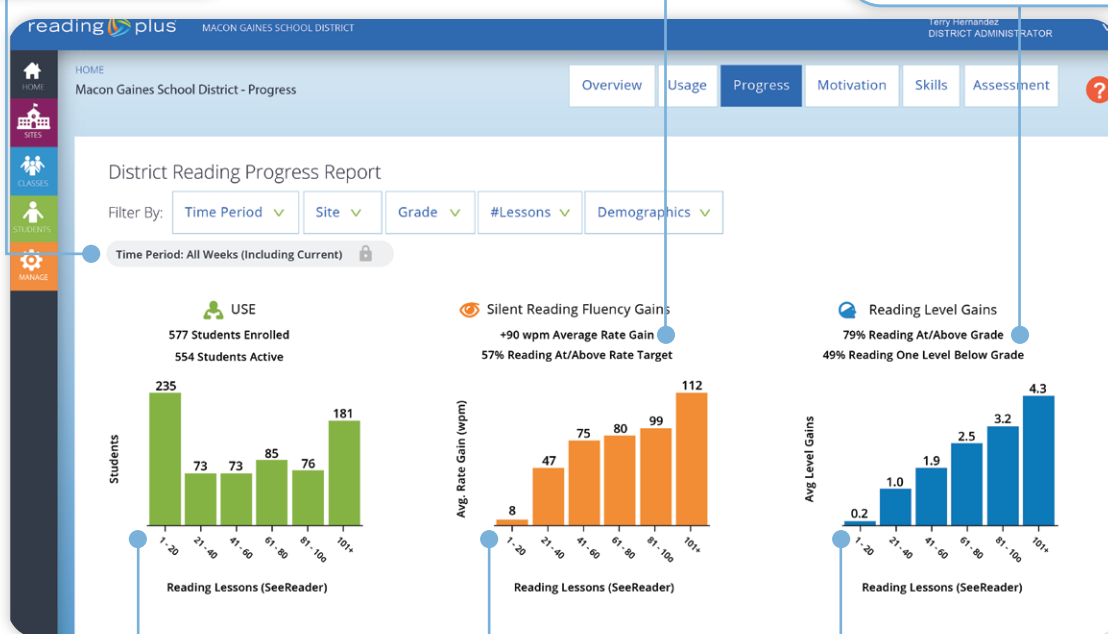
District Reading Progress Report

The *District Reading Progress Report* displays fluency and comprehension gains in the Reading component (SeeReader). The more lessons students complete, the better the results. For maximum benefits, students should complete 100 Reading lessons or more.

By default, data on the report is cumulative, including all completed weeks of instruction.

View the average words-per-minute (wpm) reading rate gain for all students, along with the percentage of students who have attained grade-appropriate reading rates.

View the percentage of students currently reading content at or above grade level, as well as the percentage reading content one level below grade.



View the number of students who have completed 1 - 20 Reading lessons, etc.

View average rate gains, based on Reading lessons completed. In this example, students who have completed between 61 - 80 Reading lessons have made average rate gains of 80 wpm.

View average grade-level gains, based on Reading lessons completed. In this example, students who have completed 61 - 80 Reading lessons have made average gains of 2.5 grade levels.



www.readingplus.com
800-READ-PLUS

District Reading Progress Report

View the number of students who have completed the initial assessment (InSight).

Note the number of students who have completed at least one Reading lesson during the defined time period.

View the average number of Reading lessons completed per school during the defined time period.

View individual schools' average words-per-minute (wpm) rate gains.

Class	Enrolled	Assessed	Active	Avg Reading Lessons (SR)	Avg Guided Rate Gains (wpm)	Avg Level Gains	% At/Close to Grade
Arlington Elementary School	14	14	12	106	120	4.3	83%
Arlington Middle School	32	31	28	128	76	2.8	72%
Benson High School	91	89	88	63	40	4.6	63%
Central Macon High School	61	60	60	87	65	1.7	92%
Macon Gaines Elementary School	32	32	60	76	82	1.5	78%
Macon Gaines High School	91	90	88	95	68	3.6	66%
Macon Gaines Middle School	61	61	60	109	110	2.3	85%
Madison Elementary School	86	82	81	68	87	3.2	76%
Park Avenue School	95	94	93	115	143	5.1	95%
Totals	563	553	540	97	90	3.5	79%

The *Totals* row at the bottom displays data for all students in the schools.

View average level gains per school in the Reading component.

Note the percentage of students in each school currently reading content in the Reading component that is either at or above grade level, or just one level below.

